

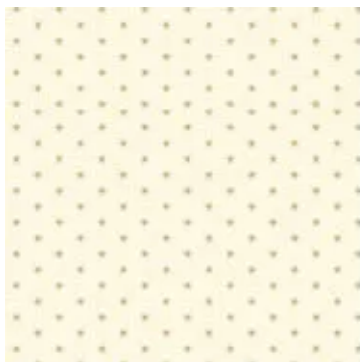
Mystery Quilt 2021 – Background and Border

Welcome back to our Mystery Quilt 2021!



For the background, you will need: use any of your leftover light scraps – or –

- **3 light fabrics:** A-9595-B, A-9594-BL, A-9577-L
- **Border:** 1 yard light fabrics – **Fabric Suggestion:** A-9595-B



Block A



Block B

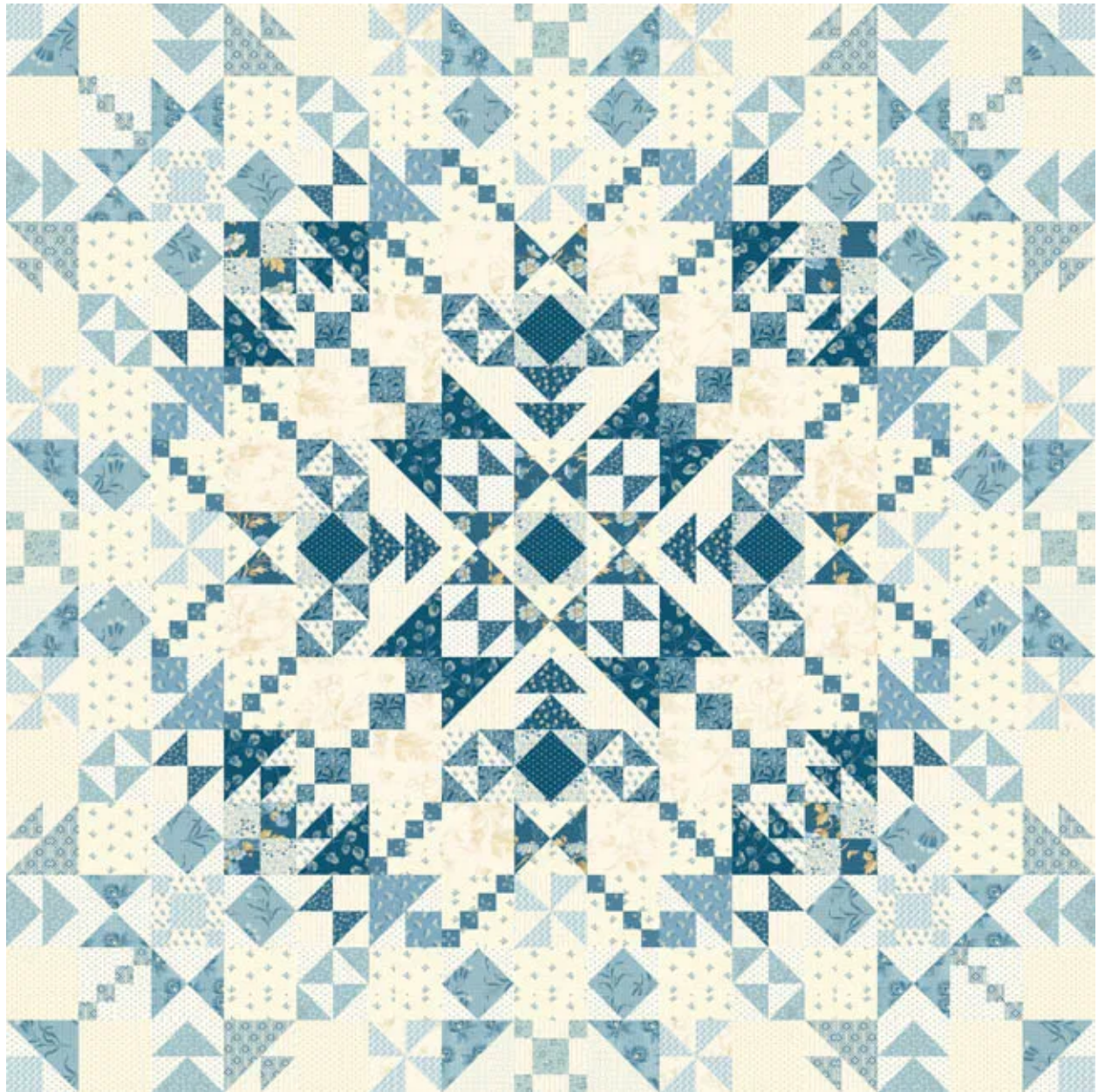


Block C

We will be making 52 total Background Squares.

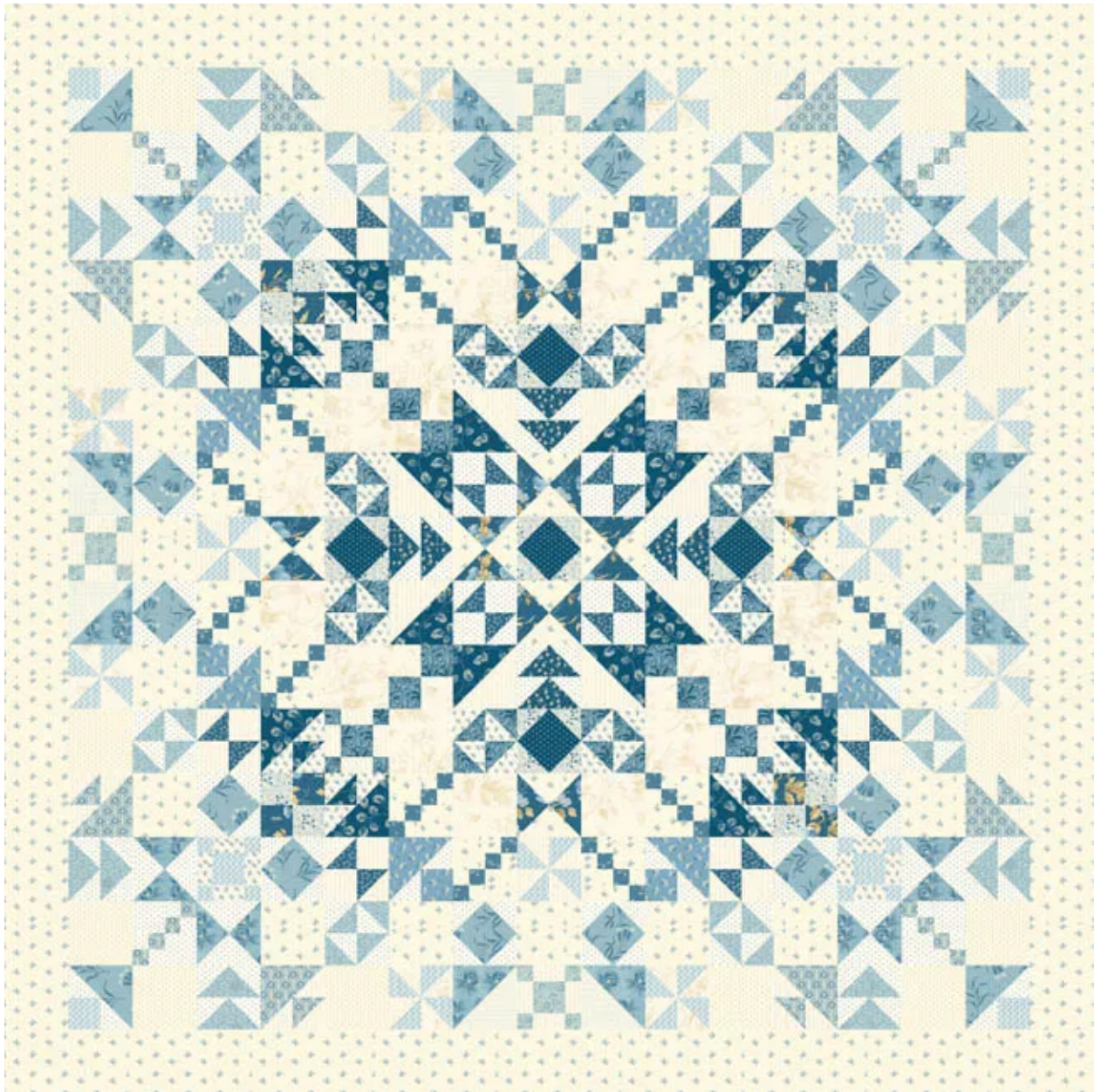
The cutting directions are as listed below:

- 16 – squares cut 4-1/2" (Color Option Block A)
- 20 – squares cut 4-1/2" (Color Option Block B)
- 16 – squares cut 4-1/2" (Color Option Block C)



Our background squares will fill the pattern as shown above in our Mystery Quilt 2021!

The next step in our journey is to sew our blocks into rows, then sew rows together.
Don't forget to push the seam allowances in opposite directions to lock your seams!
And now that your quilt center is assembled, it's time to add some borders!



Simple Border

Take two 4-1/2" x 60-1/2" strips and sew them to the top and bottom of the quilt, then take two 4-1/2" x 68-1/2" strips and add them to the left and right sides of the quilt.

This simple border option makes your completed quilt 68-1/2" x 68-1/2".



If you would like, you can now get creative and make additional borders – our **Quilter's Dozen Blocks** (you'll need 4 boxes) could be the perfect finish to your quilt! If you choose this option your first "simple" border will need to be cut 3-1/2" wide.



Or maybe **Applique** is your preference, which is how I decided to finish my mystery quilt! First we'll need to make the blocks to edge the outside of the quilt



Block A Block B

We will need to make 16 Quarter Square Triangle (QST) Blocks:

68 of Block A and 4 of Block B

The cutting directions are as listed below:

- 204 – light QSTs cut from 51 squares 5-1/4" (Color Option Block A)
- 68 – blue QSTs cut from 17 squares 5-1/4" (Color Option Block A)
- 8 – light QSTs cut from 2 squares 5-1/4" (Color Option Block B)
- 8 – blue QSTs cut from 2 squares 5-1/4" (Color Option Block B)

Once I have sewn my border blocks together and added them to the simple border as shown below, it's time to add the **applique**.

I used **4 packages** of the **Perfect Union Silhouettes** then laid out 1 package on each of the border as shown below.



...

Our phenomenal mystery quilt is called **"MICHIGAN"**,
which I dedicate to it's blue lakes and blue skies.

...

The Rainbow Option:

For the background, you will need:

- **2 light fabrics:** A-9174-L and A-9595-L
- **Border:** 1 yard light fabrics – **Fabric Suggestion:** A-9174-L



Block A



Block B

We will be making 52 total Background Squares.

The cutting directions are as listed below:

- 36 – squares cut 4-1/2" (Color Option Block A)
- 16 – squares cut 4-1/2" (Color Option Block B)



Our background squares will fill the pattern as shown above in our Mystery Quilt 2021!

The next step in our journey is to sew our blocks into rows, then sew rows together.
Don't forget to push the seam allowances in opposite directions to lock your seams!
And now that your quilt center is assembled, it's time to add some borders!



Cut 7 strips, 4-1/2" x WOF. Piece them together, then section them to two 4-1/2" x 60-1/2" strips and sew them to the top and bottom of the quilt. Then cut two 4-1/2" x 68-1/2" strips and add them to the left and right sides of the quilt. This is the simple border option makes your finished quilt size is 68-1/2" x 68-1/2".



Our Quilter's Dozen – Rainbow (you'll need 4 packages) could also be used as an extra border to add more detail and size – see layout above in blue quilt border section.

Be sure to watch our LIVE shows on our YouTube Channel to see the FINAL mystery quilt reveal on one of our future shows!

Thank you so much for joining us and I hope you make this quilt again, maybe with our new **Seamstress Collection** next time!



Happy Quilting!
Edyta